

Vocabulary Activity

Directions: Draw lines to complete the sentences.

Sentence Beginnings

The spider injects an **anaesthetic**

When the sheep says that Wilbur will die,

Templeton seems happy to **oblige**

The mowing machine leaves

Charlotte's **inheritance** is the

Sentence Endings

ability to build a web and trap flies.

into each bug that **blunders** into her web.

when Wilbur asks him for a piece of string.

swathes of hay in the field.

the pig responds with **hysterics**.

Directions: Answer this question.

1. Who in the barn lacks **scruples**, and how do you know?

Guided Close Reading

Closely reread the part at the end of chapter 5 where Charlotte talks about how she eats. Begin with, "Why not? It's true. . . ." Stop with, "Perhaps your web is a good thing after all."

Directions: Think about these questions. In the space below, write ideas or draw pictures as you think. Be ready to share your answers.

❶ According to Charlotte, why is she a trapper?

❷ Use details from the book to tell how Wilbur feels about Charlotte's eating habits.

❸ How does Charlotte explain why her feeding habits are necessary for the good of all animals?

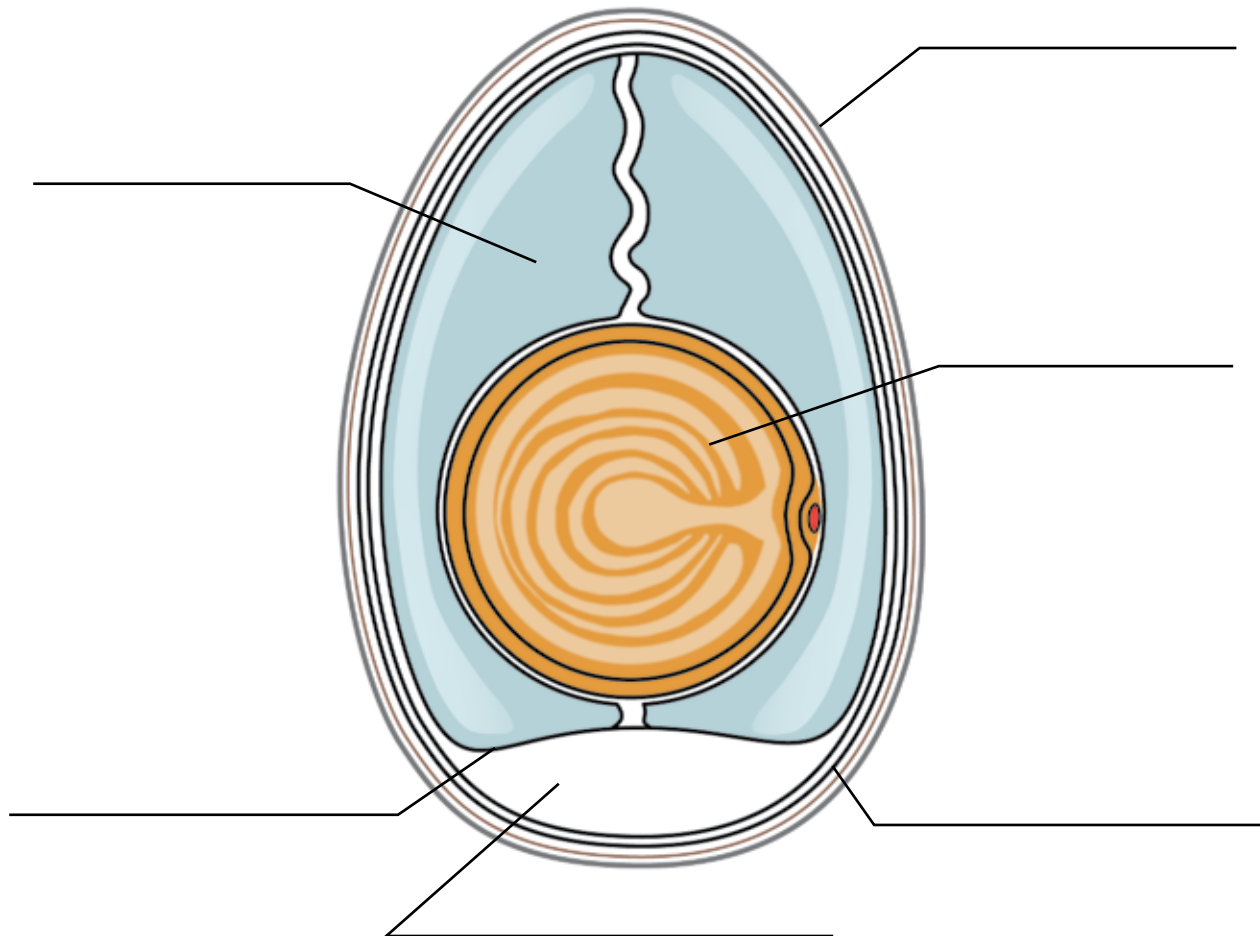
Making Connections—The Parts of an Egg

In the story, seven goslings hatch from their mother’s eggs. Inside an egg, an embryo grows into a gosling. It absorbs nutrients from the yolk and the egg white. Although it is hard, the shell lets air move in and out of the egg. As the gosling grows, it breathes.

Directions: Use books or the Internet to find a diagram of an egg. Then, label the parts of an egg in the spaces below.

Word Bank

yolk	air cell	inner membrane
shell	egg white	outer membrane



Language Learning-Regular Past Tense Verbs

Directions: Read the list of verbs from the book. Write the past tense of each verb.

Language Hints!

- Verbs are action words. They tell what happens.
- The past tense of verbs show that action happened in the past instead of right now.
- Many verbs add *-d* or *-ed* to form the past tense.

Present Tense

Past Tense

1. gasp

gasp

2. poke

3. boast

4. repeat

5. tie

6. plunge

7. kill

8. tremble

9. agree

10. sniff

Story Elements—Characters

Directions: Choose four animal characters and write their names on the lines. Then, create playing cards for them. List important information about each one and describe his or her relationship with Wilbur.

Name _____ Date _____

Chapters 5-9

Story Elements-Plot

Directions: Draw a cartoon of Wilbur's attempt to make a web. Include speech bubbles for the characters' thoughts and/or speech. Plan on scrap paper first since you can show just six images.
